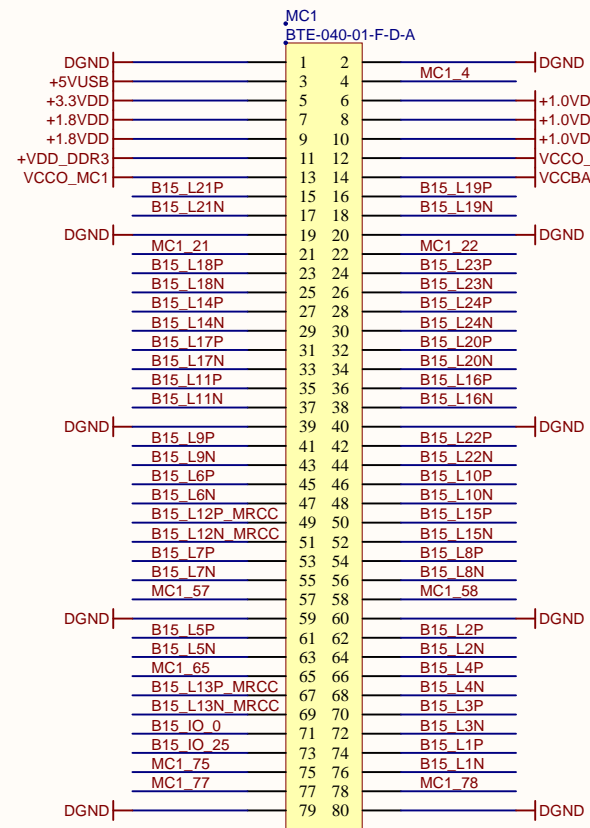
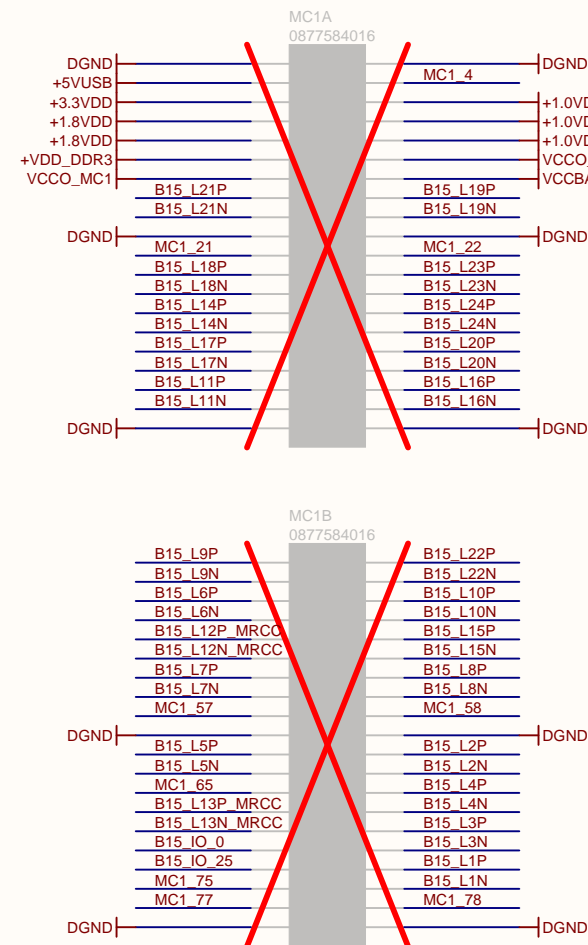


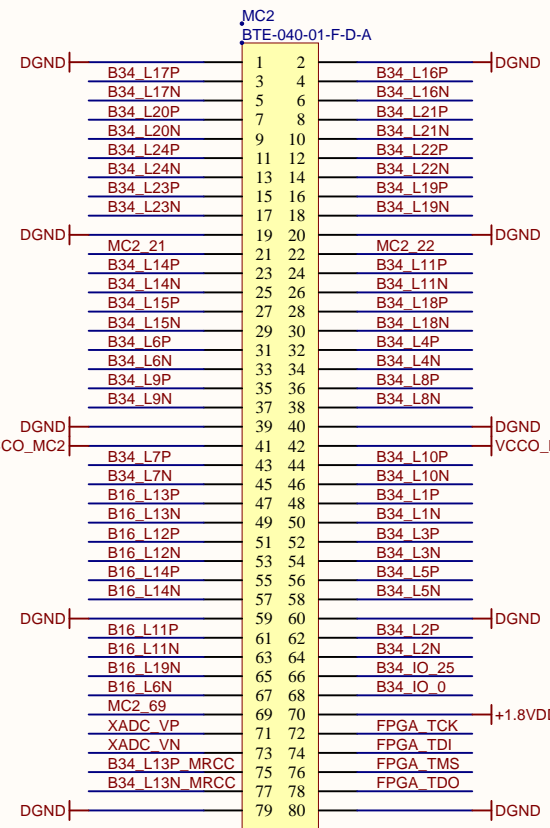
## Mezzanine Connector MC1



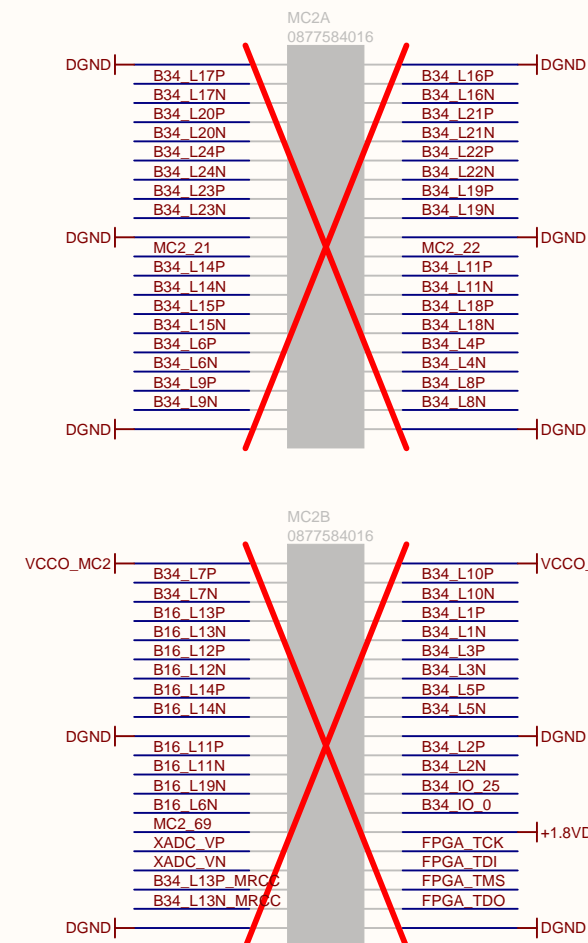
## MC1 Breakout Connectors



## Mezzanine Connector MC2



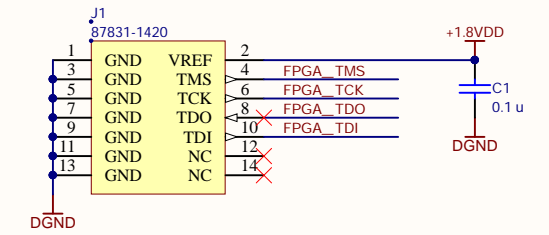
## MC2 Breakout Connectors



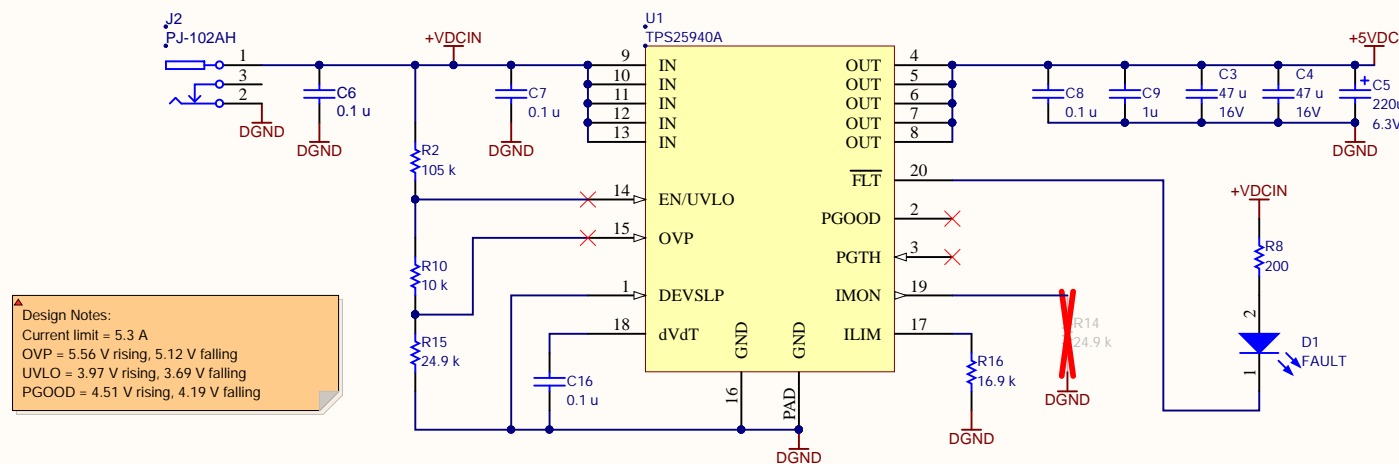
Design Note: Expansion conforms to okMC-Small Standard.

Design Note: Current capacity is 2A per pin on BSE-040

## JTAG Connector

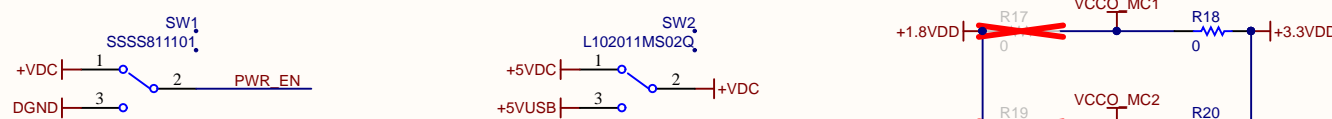


## Power Jack



Design Notes:  
Current limit = 5.3 A  
OVP = 5.56 V rising, 5.12 V falling  
UVLO = 3.97 V rising, 3.69 V falling  
PGOOD = 4.51 V rising, 4.19 V falling

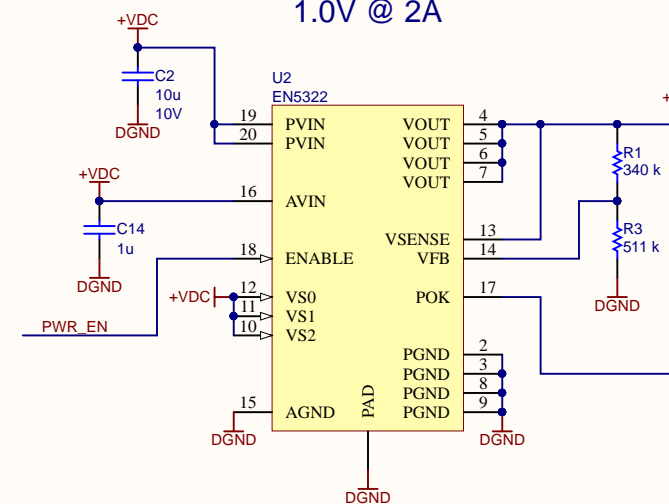
## Overvoltage Protection



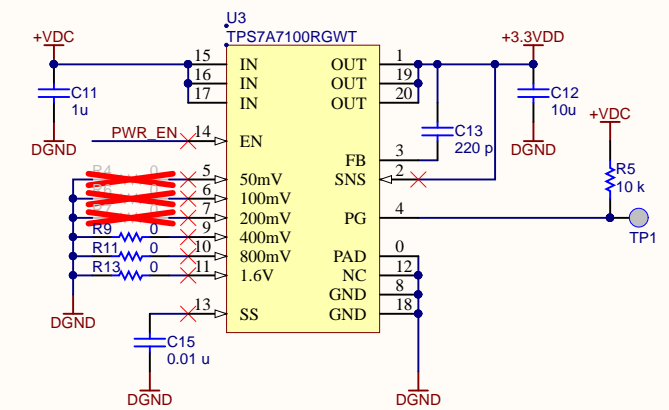
Design Note: User can disable BRK power and supply their own power via breakout headers.

Design Note: User can switch between USB and +5VDC connector for power.

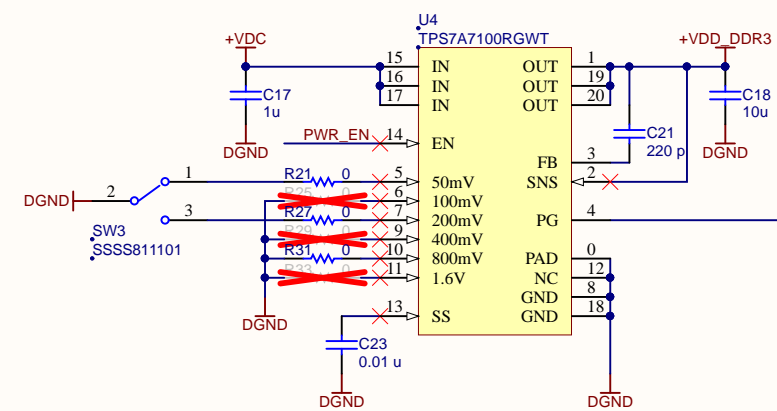
## FPGA CORE 1.0V @ 2A



## USB / CLK / AUX 3.3V @ 1A

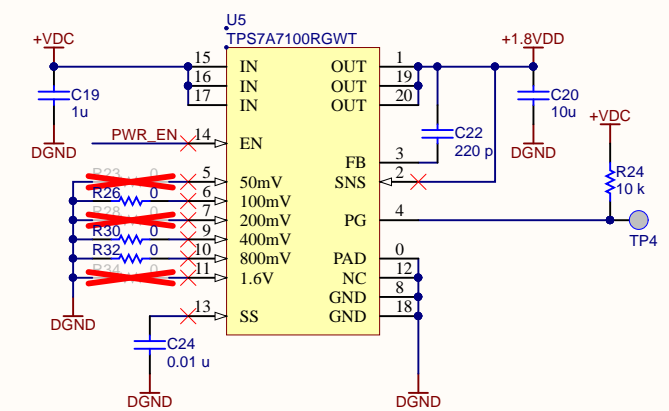


## SDRAM 1.35V or 1.5V @ 1A

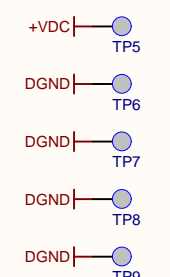


Design Note: User configurable voltage is Vref(0.5V) + ports tied to GND.

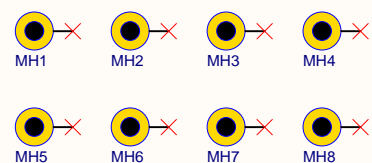
## FPGA AUX / IO 1.8V @ 1A



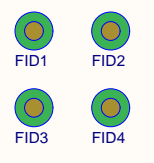
## Test Points



## Mounting Holes



## Fiducials



PCB  
BRK7305PCB-20171215

Opal Kelly Logo

ASSEMBLY  
BRK7305-ASSY